



 SWISSTEC™

Targeted

Treatment Skincare Solutions

The SwissTEC™ skincare line offers a breakthrough in treatment skincare. Our 100% Swiss Technology formulations include advanced, exclusive ingredients that ensure optimal results while maintaining the skin's sensitive balance. Luxurious and calming, the SwissTEC™ skincare line offers advanced skin solutions without the irritation associated with other product lines. A comprehensive skincare regimen on its own, SwissTEC™ has also been designed to be the perfect complement to cosmetic treatments.

Effective

100 % Swiss, 100 % Effective

SwissTEC™ is exclusive for its advanced, highly effective ingredient complexes which bring you the most advanced treatment skincare results. SwissTEC™ is formulated and manufactured in Switzerland in compliance with the most arduous laboratory standards. Its progressive formulations are comprised of luxurious, high quality ingredients native to only the most exclusive Swiss skincare laboratory located in the mountainous, secluded Swiss Riviera. For more than half a century, this world-class laboratory and its team of dermatologists have been known for their innovative research and development efforts while having pioneered the science of anti-aging, product innovation and cellular therapy in the realm of skincare. SwissTEC™ offers the benefits of these advancements in one focused, effective treatment skincare line.

Concentrated

Scientifically Advanced and Eco-Friendly

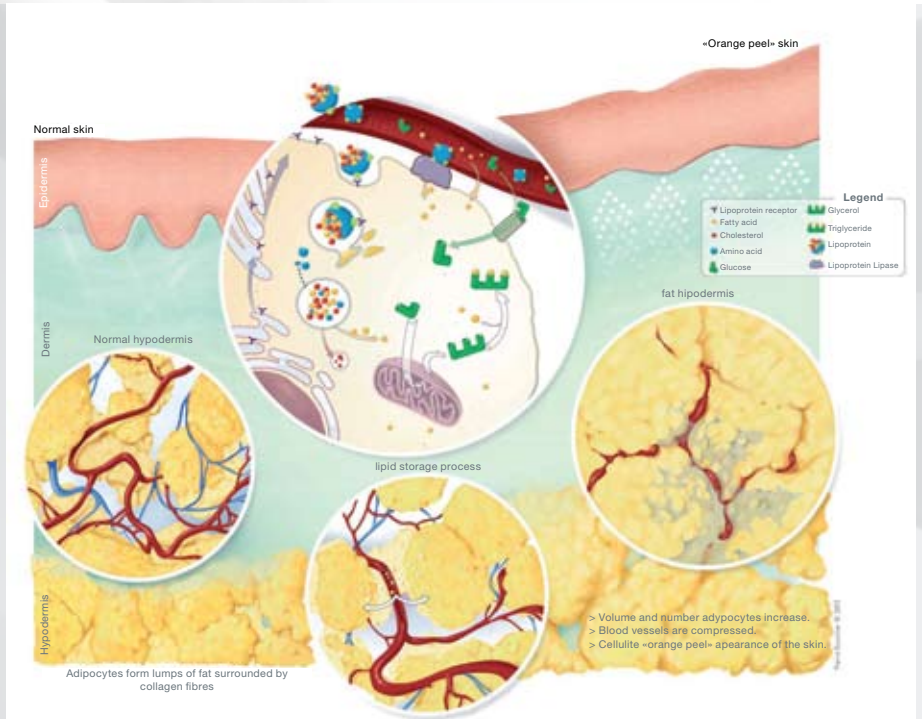
The SwissTEC™ line includes certified organic ingredients, effectively enhancing the benefits to your skin and at the same time being earth friendly. SwissTEC™ products are free of parabens, alcohols and petroleum products and are dermatologically, ophthalmologically, safety tested and non-comedogenic. High performance ingredients are what make SwissTEC™ second to no other skincare line in the market.



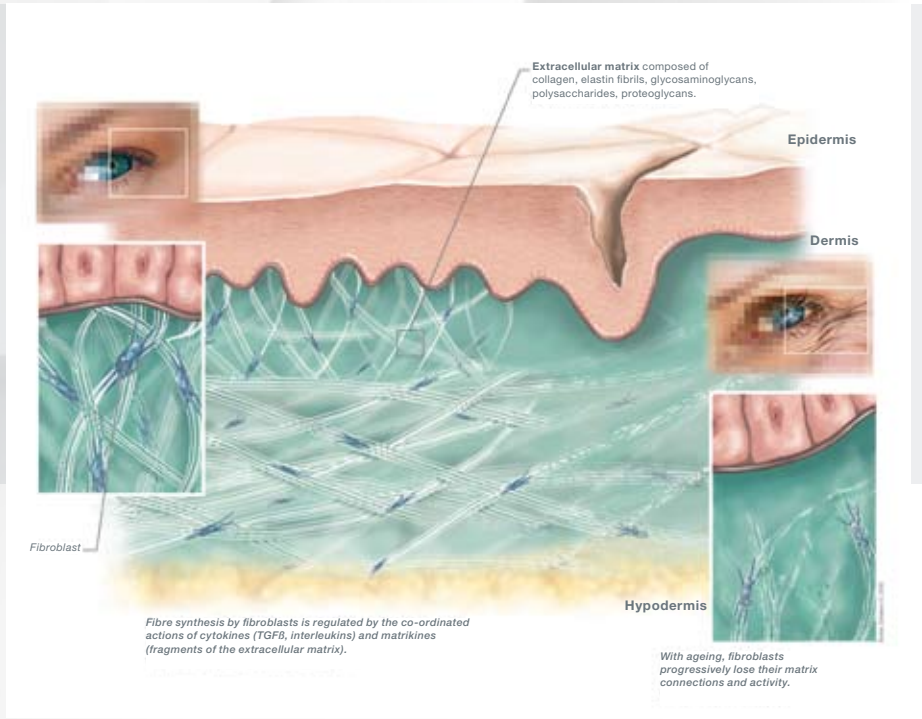
Structure of the Skin


Skin is composed of two main layers; epidermis and dermis. The thin outer layer, the epidermis, also known as the stratified squamous epithelium, consists of plate-like cells. Beneath this lies a deeper layer, the dermis, which is comprised of fibrous and elastic tissue containing blood vessels, nerve fibers, hair follicles and sweat glands. The deeper tissue of the dermis anchors the skin to underlying tissue.

Epidermal Cross Section



Extracellular Cross Section





Epidermis has 5 layers. Thickness can vary from around 0.5mm on the eyelids, to 1.5mm on the soles of the feet. The epidermis sheds itself every four weeks.

Dermis thickness ranges from 0.3 mm to 3.0 mm. There are 2 main layers, papillary dermis and reticular dermis. The papillary dermis contains capillaries, elastin, collagen and the deeper reticular dermis contains mast cells, nerve endings, lymph cells and hyaluronic acid. Fibroblasts are major cells in the dermis that produce and secrete pro-collagen and elastin.

Amino Acids are known for building collagen in cells beneath the epidermis. While searching for the appropriate amino acid for your skin, remember that they are further classified in two forms, D-form or L-form. L-form amino acids are naturally produced amino acids and therefore are the best for the skin.

Triglycerides and Fatty Acid form free fatty acids which create an anti-microbial layer that works to protect the skin from harmful bacteria and free radicals.

Extracellular Matrix is composed of collagen, elastin fibrils, glycosaminoglycans, polysaccharides and proteoglycans.

Fibroblasts are the cells that synthesize the extra cellular matrix and collagen.

Collagen is the major structural proteins in the skin that give the skin its strength and resilience.

Elastin is a protein found in the skin and tissue of the body. It helps to keep skin flexible but tight, providing a bounce-back reaction of the skin.

CIC₂ Cellular Serum

30 ml

This advanced serum helps preserve the most vital characteristics of youthful, healthy skin; suppleness, cutaneous elasticity and tone. This innovative ingredient complex stimulates signs of cell renewal leaving skin looking firmer, less lined and radiant. The ideal treatment product for daily maintenance of results from skin tightening, photofacials and wrinkle reduction procedures.

Targeted

Skin Indications:

- Aged and pre-mature aged skin.
- Photodamaged and skin affected by hyperpigmentation.

Post-Treatment Indications:

- Photofacial
- Fractionated
- Fillers/Botox™
- Dermal Infusion
- Microdermabrasion

Directions for use: Every morning and/or evening, smooth over thoroughly cleansed and toned skin of face and neck. With daily use, product should last: 3 months.

Effective

- Lightens the look of photodamage.
- Re-establishes the skin's optimal moisture balance.
- Deterioration of the skin's elastic tissue is reverse, minimizing the look of wrinkles.
- Developed to maintain and enhance the results of skin tightening procedures and photofacials.
- For optimal results, follow with Concentrated Renewal Cream.



Concentrated

- **CIC₂** The Stem Cells from Sea Fennel (CRITHMUM MARITIMUM CALLUS CULTURE FILTRATE), are a multifunctional active derived from a new technology. CIC₂ regulates pigmentary disorders by acting on the different steps of melanin synthesis, significantly lightening brown spots. It shows global protection against UVB induced free radicals. It stimulates cutaneous healing in terms of quality and of speed. It regulates keratogenesis, boosting cell proliferation and regulating differentiation. Skin renewal is stimulated and its aspect and radiance are improved.
- **Hyaluronic Acid** (SODIUM HYALURONATE) has strong moisturizing and film-forming properties. The hyaluronic acid film helps preserve the most important characteristics of youthful, healthy skin, such as suppleness, elasticity and tone.
- **Ameliiox** (LECITHIN and CARNOSINE and TOCOPHEROL and SILYBUM MARIANUM FRUIT EXTRACT) is based on a liposomal complex of Carnosine and the antioxidants Silymarin and Tocopherols. It is designed to smooth the skin, to help maintain cutaneous elastic tissue and to reduce wrinkles. Clinical tests have shown that it visibly diminishes fine lines and wrinkles and increases skin firmness.
- **The Moisture Matrix** (GLYCERYL ACRYLATE /ACRYLIC ACID COPOLYMER) is an excellent moisture balancing agent. It is substantive to the skin, thus helping to keep skin hydrated for extended periods.
- **Provitamin B5** (PANTHENOL) has anti-inflammatory, protecting and moisturizing actions. It helps restore and maintain natural skin moisture, leaving the skin feeling velvety and smooth.
- **Plantago Extract** (PLANTAGO LANCEOLATA EXTRACT) is from plantain which is organically cultivated in the Swiss Alps. This extract is demonstrated to stimulate the efficacy of collagen synthesis in vitro. Furthermore, plantain is said to have anti-oxidant, anti-inflammatory, wound healing and antimicrobial properties.
- **Green Tea Extract** (CAMELLIA SINENSIS LEAF EXTRACT) is certified organic (Cosmébio/Ecocert) and is obtained by extraction of the leaves of Camellia Sinensis. Green tea has attributed softening and toning properties. It is also said to stimulate the microcirculation, improving the irrigation of tired or atonic skins and favouring exchanges within the cells.
- **Algisium C2®** (METHYLSILANOL MANNURONATE) is an organic derivative of silicon. It has good moisturizing properties. It also plays a role in skin nutrition and tests have shown that it has cyto stimulating, anti-free radical and anti-glycation activities. Furthermore, it improves venous tonicity and has firming and lipolytic properties. It also has an anti-inflammatory effect.

Concentrated Renewal Cream

50 ml

Hydrates skin to renew its moisture balance. This nutrient-rich complex works to re-establish the look cutaneous elasticity and firmness in the skin. The ideal treatment product for daily maintenance of results from skin tightening, photofacials and wrinkle reduction procedures.

Targeted

Skin Indications:

- Aged and pre-mature aged skin.
- Photodamaged and skin affected by hyperpigmentation.
- Loss of firmness.

Post-Treatment Indications:

- Photofacial
- Fractionated
- Fillers/Botox™
- Dermal Infusion
- Microdermabrasion
- Skin Tightening

Directions for use: Every morning and evening, smooth over thoroughly cleansed and toned skin of face and neck using a gentle ascendant motion. With daily use, product should last: 3 months.

Effective

- Deterioration of the skin's elastic tissue is reversed, minimizing the look of wrinkles.
- Restores moisture balance while soothing dehydrated skin.
- Decreases the look of visible signs of ageing.
- Minimizes the appearance of photodamage.
- Developed to maintain and enhance the results of skin tightening procedures and photofacials.
- For optimal results apply over CIC₂ Cellular Serum.



Concentrated

- **Ameliiox** (LECITHIN and CARNOSINE and TOCOPHEROL and SILYBUM MARIANUM FRUIT EXTRACT) is based on a liposomal complex of Carnosine and the antioxidants Silymarin and Tocopherols. It is designed to smooth the skin, to help maintain cutaneous elastic tissue and to reduce wrinkles. Clinical tests have shown that it visibly diminishes fine lines and wrinkles and increases skin firmness.
- **CIC₂** The Stem Cells from Sea Fennel (CRITHMUM MARITIMUM CALLUS CULTURE FILTRATE), are a multifunctional active derived from a new technology. CIC₂ regulates pigmentary disorders by acting on the different steps of melanin synthesis, significantly lightening brown spots. It shows global protection against UVB induced free radicals. It stimulates cutaneous healing in terms of quality and of speed. It regulates keratogenesis, boosting cell proliferation and regulating differentiation. Skin renewal is stimulated and its aspect and radiance are improved.
- **Spent Grain Wax Complex** (SPENT GRAIN WAX and ARGANIA SPINOSA KERNEL OIL and BUTYROSPERMUM PARKII/SHEA BUTTER EXTRACT) presents itch-relieving, replenishing and soothing activities due to its well-balanced combination of physiologically valuable fatty acids, vitamins and phytosterols. Furthermore, it efficiently decreases Trans-Epidermal Water Loss (TEWL).
- **Algisium C2®** (METHYLSILANOL MANNURONATE) is an organic derivative of silicon. It has good moisturizing properties. It also plays a role in skin nutrition and tests have shown that it has cyto stimulating, anti-free radical and anti-glycation activities. Furthermore, it improves venous tonicity and has firming and lipolytic properties. It also has an anti-inflammatory effect.
- **Vitamin E** (TOCOPHERYL ACETATE) has an anti-oxidant action and skin moisturizing properties. It helps the skin look more radiant and tones tissue. It also plays an important role in preventing damage due to UV radiation.
- **Vitamin A** (RETINYL PALMITATE) helps improve texture, firmness and smoothness of the skin. It is also said to contribute to the prevention of desquamation and dry skin. It helps maintain healthy skin.
- **Vitamin C Spheres** (ASCORBYL PALMITATE) and Vitamin E (TOCOPHERYL ACETATE) are dramatically active in fighting against cell oxidation (the external cause of the premature ageing process) and visible signs of ageing such as dark spots and wrinkles.
- **Provitamin B5** (PANTHENOL) has anti-inflammatory, protecting and moisturizing actions. It helps restore and maintain natural skin moisture, leaving the skin feeling velvety and smooth.

Redefining Neck Emulsion

50 ml

This powerful formula tones and strengthens skin of the neck and décolleté. Skin texture is improved while enhancing its firmness and elasticity. The ideal treatment product for enhancing the results of skin tighteninging procedures administered in / around the neck and décolleté.

Targeted

Skin Indications:

- Aged and pre-mature aged skin
- Loss of firmness
- Dehydrated skin

Post-Treatment Indications:

- Photofacials
- Skin Tightening
- Dermal Infusion

Directions for use: Every morning and evening, smooth over thoroughly cleansed and toned skin of neck and décolleté area, using a gentle ascendant motion. With daily use, product should last: 3 months.

Effective

- Enhances the look of tighter, contoured, youthful skin.
- Skin around the neck and décolleté appears slimmer.
- Decreases the look of photodamage while increasing radiance in the skin.
- Re-establishes the skin's optimal moisture balance.
- Developed to enhance the results of skin tighteninging procedures of the neck and décolleté.



Concentrated

- **CIC₂** The Stem Cells from Sea Fennel (CRITHMUM MARITIMUM CALLUS CULTURE FILTRATE), are a multifunctional active derived from a new technology. CIC₂ regulates pigmentary disorders by acting on the different steps of melanin synthesis, significantly lightening brown spots. It shows global protection against UVB induced free radicals. It stimulates cutaneous healing in terms of quality and of speed. It regulates keratogenesis, boosting cell proliferation and regulating differentiation. Skin renewal is stimulated and its aspect and radiance are improved.
- **Sveltonyl®** The Synergetic Slimming Complex (LESPEDEZA CAPITATA EXTRACT, ULVA LACTUCA EXTRACT, COMBRETUM MICRANTHUM LEAF EXTRACT, AMMONIUM GLYCYRRHIZATE, NIACINAMIDE and THREONINE) combines four plant extracts with marked anti-cellulite properties. It acts on the lipid metabolism and favours the desinfiltration of the tissue. Moreover, it improves the texture, elasticity and firmness of the skin.
- **Hyaluronic Acid** (SODIUM HYALURONATE) has strong moisturizing and film-forming properties. The hyaluronic acid film helps preserve the most important characteristics of youthful, healthy skin, such as suppleness, elasticity and tone.
- **Borage Seed Oil** (BORAGO OFFICINALIS SEED OIL) helps delay skin ageing and wrinkles. It also prevents dehydration and loss of skin elasticity. It is notably recommended for its moisturizing and anti-ageing functions. It presents regenerative, firming and restructuring properties.
- **Vitamin E** (TOCOPHERYL ACETATE) has an anti-oxidant action and skin moisturizing properties. It helps the skin look more radiant and tones tissue. It also plays an important role in preventing damage due to UV radiation.
- **Kigelia Extract** (KIGELIA AFRICANA FRUIT EXTRACT) is rich in flavonoids and phytosterol saponosides with hormone-like properties for firming activity. It helps tone, strengthen and improve skin firmness and elasticity.
- **Algisium C2®** (METHYLSILANOL MANNURONATE) is an organic derivative of silicon. It has good moisturizing properties. It also plays a role in skin nutrition and tests have shown that it has cyto-stimulating, anti-free radical and anti-glycation activities. Furthermore, it improves venous tonicity and has firming and lipolytic properties. It also has an anti-inflammatory effect.
- **Provitamin B5** (PANTHENOL) has anti-inflammatory, protecting and moisturizing actions. It helps restore and maintain natural skin moisture, leaving the skin feeling velvety and smooth.
- **Masterwort Extract** (PEUCEDANUM OSTRUTHIUM EXTRACT) is obtained from plants organically cultivated in the Swiss Alps. The extract has demonstrated wound healing and re-epithelialization properties. In Switzerland, people call it the Queen of the Plants.

Concentrated Renewal Eye Cream

15 ml

Hydrates the delicate skin of the eye area to renew its moisture balance and re-establishes the look of elasticity and firmness. The ideal treatment product for enhancing results from skin tightening procedures around the eye area.

Targeted

Skin Indications:

- Fine lines and wrinkles around the eye area
- Puffy eyes
- Dehydrated skin

Post-Treatment Indications:

- Photofacial
- Fractionated
- Fillers/Botox™
- Dermal Infusion
- Skin Tightening

Directions for use: In the morning and evening, apply delicately on a thoroughly cleansed eye contour area with fingertips. Follow with day/night SwisSTEC™ treatment regime. With daily use, product should last: 3 months.

Effective

- Nourishes dehydrated skin reducing the look of puffiness and pre-mature aging.
- The appearance of dark circles and redness is reduced.
- A free-radical scavenging effect minimizes the appearance of wrinkles around the eye contour.
- Developed to enhance the results of skin tightening in and around the eye area.
- For optimal results, apply under Concentrated Renewal Cream or Concentrated Mattifying Cream.



Concentrated

- **CIC₂** The Stem Cells from Sea Fennel (CRITHMUM MARITIMUM CALLUS CULTURE FILTRATE) are a multifunctional active derived from a new technology. CIC₂ regulates pigmentary disorders by acting on the different steps of melanin synthesis, significantly lightening brown spots. It shows global protection against UVB induced free radicals. It stimulates cutaneous healing in terms of quality and of speed. It regulates keratogenesis, boosting cell proliferation and regulating differentiation. Skin renewal is stimulated and its aspect and radiance are improved.
- **Hyaluronic Acid** (SODIUM HYALURONATE) has strong moisturizing and film-forming properties. The hyaluronic acid film helps preserve the most important characteristics of youthful, healthy skin, such as suppleness, elasticity and tone.
- **Shea Butter** (BUTYROSPERMUM PARKII/SHEA BUTTER) has cell regenerative virtues and thus efficiently delays skin ageing. It is moreover granted softening, moisturizing and restructuring virtues. It is organically cultivated.
- **Vitamin E** (TOCOPHERYL ACETATE) has an anti-oxidant action and skin moisturizing properties. It helps the skin look more radiant and tones tissue. It also plays an important role in preventing damage due to UV radiation.
- **Vitamin A** (RETINYL PALMITATE) helps improve texture, firmness and smoothness of the skin. It is also said to contribute to the prevention of desquamation and dry skin. It helps maintain healthy skin.
- **Provitamin B5** (PANTHENOL) has anti-inflammatory, protecting and moisturizing actions. It helps restore and maintain natural skin moisture, leaving the skin feeling velvety and smooth.
- **Green Microalgae Oligopeptide** (CHLORELLA VULGARIS EXTRACT) improves the appearance of vascular imperfections such as dark circles. It was shown to attenuate dark circles visibly, increasing the transparency of the skin and decreasing its pigmentation. It was also shown to reduce the redness of vascular lesions visibly. Moreover, it induces an increase in skin firmness and tone. Furthermore, it increases collagen and elastin production and inhibits collagenase and elastase and improves the dermis-epidermis junction.
- **The Activating Complex** (GYNOSTEMMA PENTAPHYLLUM EXTRACT and PANAX GINSENG EXTRACT) combines the Chinese healing secrets of Ginseng with Gynostemma to increase cell respiration and protect and nourish dry skin thanks to an increase in blood circulation. It enhances the delivery of nutrients and facilitates the removal of toxins, thus reducing puffiness and alleviating bags under the eyes.
- **Vitamin C-PMG** (MAGNESIUM ASCORBYL PHOSPHATE) dramatically fights the ageing process and helps prevent the appearance of wrinkles thanks to its free-radical scavenging effect and through the stimulation of the synthesis of collagen.

Vitamin C-PMG Eye Serum

15 ml

This powerful vitamin complex decreases the look of dark circles and puffiness around the eyes while improving the appearance of skin elasticity. The ideal treatment product for enhancing results from skin tightening procedures around the eye area.

Targeted

Skin Indications:

- Discoloration
- Puffy eyes
- Loss of elasticity

Post-Treatment Indications:

- Photofacial
- Fractionated
- Fillers/ Botox™
- Dermal Infusion
- Skin Tightening

Directions for use: In the morning and evening, apply delicately on a thoroughly cleansed eye contour area with fingertips. Use under your SwissTEC™ treatment regime. With daily use, product should last: 3 months.

Effective

- A free-radical scavenging effect minimizes the appearance of wrinkles and dark circles around the eye contour.
- Skin remains hydrated all day / night.
- This antioxidant rich formula improves the look of firmness of the skin.
- Developed to enhance the results of skin tightening in and around the eye area.
- For optimal results, apply under Concentrated Renewal Cream.



Concentrated

- **Vitamin C-PMG** (MAGNESIUM ASCORBYL PHOSPHATE) dramatically fights the ageing process and helps prevent the appearance of wrinkles thanks to its free-radical scavenging effect and through the stimulation of the synthesis of collagen.
- **Hyaluronic Acid** (SODIUM HYALURONATE) has strong moisturizing and film-forming properties. The hyaluronic acid film helps preserve the most important characteristics of youthful, healthy skin, such as suppleness, elasticity and tone.
- **Plantago Extract** (PLANTAGO LANCEOLATA EXTRACT) is from plantain which is organically cultivated in the Swiss Alps. This extract was demonstrated to stimulate the efficacy of collagen synthesis in vitro. Furthermore, plantain is said to have anti-oxidant, anti-inflammatory, wound healing and antimicrobial properties.
- **Aloe Vera Extract** (ALOE BARBADENSIS LEAF JUICE) has soothing, moisturizing, purifying and regenerative virtues. It is also allotted film-forming properties.
- **Moisture Matrix** (GLYCERYL ACRYLATE/ACRYLIC ACID COPOLYMER) is an excellent moisture balancing agent. It is substantive to the skin, thus helping to keep skin hydrated for extended periods.
- **Provitamin B5** (PANTHENOL) has anti-inflammatory, protecting and moisturizing actions. It helps restore and maintain natural skin moisture, leaving the skin feeling velvety and smooth.
- **Algisium C2®** (METHYLSILANOL MANNURONATE) is an organic derivative of silicon. It has good moisturizing properties. It also plays a role in skin nutrition and tests have shown that it has cyto-stimulating, anti-free radical and anti-glycation activities. Furthermore, it improves venous tonicity and has firming and lipolytic properties. It also has an anti-inflammatory effect.
- **Masterwort Extract** (PEUCEDANUM OSTRUTHIUM EXTRACT) is obtained from plants organically cultivated in the Swiss Alps. The extract has demonstrated wound healing and re-epithelialization properties. In Switzerland, people call it the Queen of the Plants.

Optimal Cleanser

150 ml

This mild cleanser dissolves makeup and impurities leaving the skin feeling purified and re-energized. This calming gel-based formula contains ingredients that soothe and moisturize with an optimal pH that maximizes the benefits to all SwissTEC™ treatment products. Aloe Vera purifies and regenerates the epidermis leaving skin feeling revitalized.

Targeted

Skin Indications:

- Mild formula for all skin types.

Post-Treatment Indications:

- Mild formula with optimal pH to maximize results of all cosmetic treatments.

Directions for use: Morning and evening, apply on moistened skin of face and neck. Lightly massage to obtain a soft foamy lather before adding water. Thoroughly rinse with lukewarm water. Pat dry, tone with Swiss Aqua Mineral Mist and follow with day or night SwissTEC™ treatment regime. With daily use, product should last: 3 months.

Effective

- Skin is cleansed and protected from the abuse from environmental elements.
- The skin's natural moisture barrier is strengthened.
- Skin is left feeling velvety smooth, soft and cleansed.
- Developed with optimal pH to enhance the results of cosmetic treatments.
- For maximized results use Optimal Cleanser prior to applying all SwissTEC™ products.



Concentrated

- **Provitamin B5 (PANTHENOL)** has anti-inflammatory, protecting and moisturizing actions. It helps restore and maintain natural skin moisture, leaving the skin feeling velvety and smooth.
- **Aloe Vera Extract (ALOE BARBADENSIS LEAF JUICE)** has soothing, moisturizing, purifying and regenerative virtues. It is also allotted film-forming properties.
- **Aquarich™ (AVENA STRIGOSA SEED EXTRACT and LECITHIN)** is a long term moisturizing complex composed of active agents from black oat and unsaturated phospholipids. The components act in synergy to bind moisture to the skin and strengthen the structure of the skin barrier. In vivo tests have shown that the complex has excellent long-term and deep moisturizing effects. Skin hydration is improved even after 24 hours.
- **Gentle Cleansing Agent (DISODIUM COCOAMPHODIACETATE)** dissolves make-up and impurities without harming the skin.
- **Plant-based Pearlisng Agent (LAURYL GLUCOSIDE and STEARYL CITRATE)** is suitable for pearlescent surfactant preparations. It is obtained from natural sources and presents outstanding mildness.
- **Soothing Active from an Indian Plant (BOERHAVIA DIFFUSA ROOT EXTRACT)** re-establishes the sensitivity threshold of the skin by stopping the amplification and by contributing to resolving of the inflammatory reaction. In vivo tests have demonstrated that this active limits the appearance of erythema caused by a neurogenic substance, diminishes skin redness and has a soothing long-term effect, significantly reducing skin sensitivity and irritability, whilst showing a regenerating and moisturizing effect.
- **Pentavitin® (SACCHARIDE ISOMERATE)** is a soothing agent. It possesses pronounced water retaining properties, thus reducing dryness, providing effective hydration and making rough skin softer. It is chemically bound to keratin (does not wash out) and, thus, appreciably and permanently improves the water retention of keratin.

Optimal Eye & Lip Makeup Remover

100 ml

This gentle makeup remover dissolves makeup and impurities leaving the skin around the eye and lip area feeling purified and re-energized. This rich foam-based formula contains ingredients that gently soothe and moisturize the sensitive tissue of the eyes and lips while leaving skin feeling clean and soft.

Included with product are 40 sterile, 100% cotton, high quality makeup remover pads.

Targeted

Skin Indications:

- Mild, foaming formula for all skin types.

Post-Treatment Indications:

- Mild formula with optimal pH to maximize results of all cosmetic treatments.

Directions for use: Press down on the pump to release small amount of foam onto a fresh cotton pad. Gently wipe the eyes and lips to dissolve makeup. Rinse well with lukewarm water. Repeat if necessary. Follow with nightly SwissTEC™ treatment regime. With daily use, product should last: 2 months.

Effective

- Sensitive tissue of the eye and lip contours is gently purified.
- The skin's natural moisture barrier is strengthened.
- Skin is left feeling velvety smooth, soft and cleansed.
- Developed with optimal pH to enhance the results of cosmetic treatments.
- For maximized results use to remove makeup and impurities prior to using SwissTEC™ Optimal Cleanser.



Concentrated

- **Provitamin B5 (PANTHENOL)** has anti-inflammatory, protecting and moisturizing actions. It helps restore and maintain natural skin moisture, leaving the skin feeling velvety and smooth.
- **Masterwort Extract (PEUCEDANUM OSTRUTHIUM EXTRACT)** is obtained from plants organically cultivated in the Swiss Alps. The extract has demonstrated wound healing and re-epithelialization properties. In Switzerland, people call it the Queen of the Plants.
- **Calendula/Pot Marigold Extract (CALENDULA OFFICINALIS FLOWER EXTRACT)** has soothing, softening and moisturizing virtues.
- **Pentavitin® (SACCHARIDE ISOMERATE)** is a soothing agent. It possesses pronounced water retaining properties, thus reducing dryness, providing effective hydration and making rough skin softer. It is chemically bound to keratin (does not wash out) and, thus, appreciably and permanently improves the water retention of keratin.
- **Soothing Active from an Indian Plant (BOERHAVIA DIFFUSA ROOT EXTRACT)** re-establishes the sensitivity threshold of the skin by stopping the amplification and by contributing to resolving of the inflammatory reaction. In vivo tests have demonstrated that this active limits the appearance of erythema caused by a neurogenic substance, diminishes skin redness and has a soothing long-term effect, significantly reducing skin sensitivity and irritability, whilst showing a regenerating and moisturizing effect.
- **Gentle Cleansing Agent (DECYL GLUCOSIDE)** dissolves makeup and impurities without harming the skin. This non-ionic surfactant has excellent foaming capacity and good skin compatibility. It is based on glucose derived from corn or potato starch and natural fatty alcohols.
- **Aloe Vera Extract (ALOE BARBADENSIS LEAF JUICE)** has soothing, moisturizing, purifying and regenerative virtues. It is also allotted film-forming properties.

Swiss Aqua Mineral Mist

120 ml

This refreshing nutrient-rich mineral mist aids in increasing the epidermal water content and water retention helping to restore and maintain natural skin moisture, leaving the skin feeling velvety and smooth.

Targeted

Skin Indications:

- Hydrating formula for all skin types.

Post-Treatment Indications:

- Mild formula to hydrate delicate skin tissue and maximize results of all cosmetic treatments.

Directions for use: Morning and evening, after cleansing, spray over skin of face and neck. Follow with day or night SwisSTEC™ treatment regime. Reapply throughout the day to refresh the skin. This product can be applied after mineral makeup. With daily use, product could last up to 3 months.

Effective

- Contains Swiss Water, rich in calcium and magnesium offering rich nutrients and hydration to the epidermis.
- Re-mineralizes the skin with vitamins A, B₂ and C renewing radiance upon application.
- Skin reaches its optimal moisture balance.
- Ideal for moisturizing the skin throughout the day, most especially post-treatment to maximize the skin's moisture balance all day long.
- Highly effective in setting and revitalizing mineral makeup application.



Concentrated

- **The Swiss Spa Water** (THERMAL WATER) is a curative water, which offers biochemical therapeutic virtues of its minerals. It is particularly rich in calcium and magnesium. It draws its richness from deep in the ground. The spring has been known since the Roman era.
- **Aquaxyl™** (XYLITYLGLUCOSIDE, ANHYDROXYLITOL and XYLITOL) has a moisturizing and restructuring action. It optimizes water reserves by increasing the epidermal water content and the dermal water reservoirs. It limits trans epidermal water loss by stimulating the synthesis of ceramides, which improves the skin barrier function, rendering the skin more resistant to external aggressions. It gives a visual improvement of the skin surface by normalizing desquamation and smoothing the microrelief.
- **Sodium PCA** can be defined as the essential physiological moisturizer of the epidermis as it has the capacity of retaining water in the stratum corneum dramatically, thus smoothing the microrelief and softening the skin.
- **The Concentrate of Atomised Sea Water** (MARIS AQUA /SEA WATER) is very rich in macroelements, such as calcium and magnesium, and in oligo-elements, such as iron and zinc. It favours the mineral re-equilibration of the skin and thus helps re-establish a physiological terrain which is indispensable for healthy skin.
- **Provitamin B5** (PANTHENOL) has anti-inflammatory, protecting and moisturizing actions. It helps restore and maintain natural skin moisture, leaving the skin feeling velvety and smooth.

Tri-foliant™

50 ml

SwissTEC™ Tri-foliant™ is a powerful triple-action exfoliating complex designed to encourage balanced skin texture utilizing physical, scientific and vitamin based exfoliation.

Targeted

Skin Indications:

- An effective formula for all skin types, use weekly.
- For thicker dehydrated skin can be used twice per week.
- Dehydrated skin.
- Uneven skin tone and texture.

Post-Treatment Indications:

- Photofacial
- Fractionated
- Fillers/ Botox™
- Dermal Infusion
- Microdermabrasion

Directions for use: Once or twice a week, morning or evening, apply on perfectly cleansed skin of face and neck. Let set for 10–15 minutes. When dry exfoliate off by lightly rubbing in small circles. Rinse with warm water. Tone with Swiss Aqua Mineral Mist and pat dry. Follow with treatment serum and cream. For a more intensive treatment apply Soothing Mineral Mask and follow with SwissTEC™ treatment serum and cream. With use 2x per week, product should last: 4 months.

Effective

- Dead skin cells are eliminated from the skin surface resulting in an overall glow.
- Improves the appearance of skin tone and texture.
- Increased skin radiance minimizes the look of dull, pigmented tone and texture.
- Ideal for at-home maintenance between microdermabrasion treatments.
- Removes dead skin cells effectively post-fractionated.
- For maximized results, use alongside SwissTEC™ Optimal Cleanser.



Concentrated

- **Quartz Exfoliating Particles** (SILICA) remove impurities and dead cells from the skin surface, thus stimulating skin oxygenation and cell turnover.
- **Vitamin C Ester** (ASCORBYL TETRAISOPALMITATE) has many functions, including lightening, promoting collagen synthesis and inhibiting lipid peroxidation. Ascorbyl Tetraisopalmitate is a highly stable form of vitamin C. It has good skin affinity and thus exhibits excellent percutaneous absorption and is decomposed to free vitamin C after absorption into skin. It then shows physiological functions as vitamin C.
- **Salicylic Acid** (SALICYLIC ACID) is a keratolytic agent that favours exfoliation, and thus improves the appearance and feel of the skin.
- **Camphor Essential Oil** (CAMPHOR) has anaesthetic, anti-inflammatory, antiseptic, astringent, cooling and re-freshing properties.
- **Eucalyptus Essential Oil** (EUCALYPTUS GLOBULUS LEAF OIL) has purifying, rubefacient and toning properties. It is moreover a powerful antiseptic.
- **Peppermint Essential Oil** (MENTHA PIPERITA/PEPPERMINT OIL) is an aromacological fragrance credited with antiseptic, refreshing and toning properties.
- **Vitamin A** (RETINYL PALMITATE) helps improve texture, firmness and smoothness of the skin. It is also said to contribute to the prevention of desquamation and dry skin. It helps maintain healthy skin.
- **Provitamin B5** (PANTHENOL) has anti-inflammatory, protecting and moisturizing actions. It helps restore and maintain natural skin moisture, leaving the skin feeling velvety and smooth.
- **Vitamin E** (TOCOPHERYL ACETATE) has an anti-oxidant action and skin moisturizing properties. It helps the skin look more radiant and tones tissue. It also plays an important role in preventing damage due to UV radiation.
- **White Tea** (CAMELIA SINENSIS LEAF EXTRACT) has been prized by Chinese tea connoisseurs for centuries. Recent research has shown that white tea has higher levels of antioxidants than green tea. Thus its protective effect on the skin as an antioxidant and free radical scavenger is particularly high.

Clarifying Elixir

30 ml

This effective formulation purifies the skin's surface from pore clogging, acne-causing particles while gently moisturizing acne prone skin.

Targeted

Skin Indications:

- Oily/acne prone skin
- Enlarged pores
- Blemished skin

Post-Treatment Indications:

- Photofacials
- Dermal Infusion
- Microdermabrasion

Directions for use: Every morning and evening, smooth over thoroughly cleansed and toned skin of face and neck using a gentle ascendant motion. Follow with Swiss Aqua Mineral Mist and SwissTEC™ treatment cream. With daily use, product should last: 3 months.

Effective

- Pores are thoroughly cleansed and purified.
- Acne-causing, dead skin cells are removed.
- Balances the sensitive moisture levels in acne-prone skin to ensure the optimal levels of hydration to the epidermis.
- Regular usage improves duration of benefits from acne-specific skin treatments.
- For optimal results, use with SwissTEC™ Concentrated Mattifying Serum and Cream.



Concentrated

- **Glycolic Acid** (GLYCOLIC ACID) is an alpha-hydroxy acid (AHA). It helps dissolve the intercellular cement responsible for abnormal keratinization, leading to a sloughing off of dead skin cells. This has demonstrated effectiveness in helping to clear pores and to improve the aspect of acne-prone skin. Furthermore, it improves skin moisturization.
- **Salicylic Acid** (SALICYLIC ACID) is a keratolytic agent that favours exfoliation, and thus improves the appearance and feel of the skin.
- **Zinc Gluconate** (ZINC GLUCONATE) combines Zinc and Gluconate. Zinc acts directly on both enzymes (as a cofactor for SOD and an activator for DNA and RNA polymerases) and cells (by stimulating protein synthesis, especially of keratin, collagen and elastin). Moreover, it helps regulate oily and acne-prone skin. Gluconate promotes the absorption and incorporation of zinc and is important in cell regeneration. Zinc Gluconate fights the ageing process (by remodelling, restoring vitality and promoting healing), protects DNA, helps acne-prone skin (by regulating sebum secretion and thanks to its anti-microbial activity) and soothes the skin.
- **Biological Re-Equilibrating Agent** (ALPHA-GLUCAN OLIGOSACCHARIDE) balances the biological equilibrium of the skin's functions, thus helping the skin defend itself against external aggressions such as pollution.
- **Lemonbalm Floral Water** (MELISSA OFFICINALIS FLOWER/LEAF/STEAM WATER) is certified Organic (Cosmébio/ Ecocert) and is obtained by steam distillation of Melissa Officinalis. Lemonbalm, also called Balm Mint, has been used for centuries in cosmetics. It is appreciated for its tonic and regenerating properties, particularly for sensitive and devitalised skin.
- **Sunflower Oil** (HELIANTHUS ANNUUS/SUNFLOWER SEED OIL) presents restructuring, regenerative and moisturizing properties. It is from organically cultivated sunflower.
- **Spherical Magnesium Silicate Particles** (MAGNESIUM SILICATE) provide smoothness and good spreadability. Of natural origin, these particles have a light oil-absorbing action to mattify the skin and act as an invisible filler, giving a soft-focus effect.
- **Aloe Vera Extract** (ALOE BARBADENSIS LEAF JUICE) has soothing, moisturizing, purifying and regenerative virtues. It is also allotted film-forming properties.
- **Provitamin B5** (PANTHENOL) has anti-inflammatory, protecting and moisturizing actions. It helps restore and maintain natural skin moisture, leaving the skin feeling velvety and smooth.

Concentrated Mattifying Serum

30 ml

This light, specialized serum offers balanced mattifying moisture while purifying the skin of pore clogging impurities improving the look of tone and texture.

Targeted

Skin Indications:

- Oily/acne prone skin
- Enlarged pores
- Blemished skin

Post-Treatment Indications:

- Photofacials
- Fractionated
- Dermal Infusion
- Microdermabrasion

Directions for use: Every morning and/or evening, smooth over thoroughly cleansed skin of face and neck, following with SwissTEC™ Swiss Aqua Mineral Mist and Concentrated Mattifying Cream. With daily use, product should last: 3 months.

Effective

- Oil absorbing formula deeply hydrates while purifying the pores.
- Skin elasticity is improved.
- Navigates the sensitive moisture balance in acne-prone skin to ensure the optimal levels of hydration to the epidermis.
- The appearance of pore size is reduced, improving the textural properties of the skin.
- Regular usage improves duration of benefits from acne-specific skin treatments.
- For optimal results, use with SwissTEC™ Clarifying Elixir and Concentrated Mattifying Cream.



Concentrated

- **Oleuropein** The Multifunctional Active from Organically Grown Olive Leaves (OLEA EUROPAEA / OLIVE LEAF EXTRACT) is a natural polyphenol. It helps fight against free radicals, improve skin elasticity and moisturization and fight the bacteria responsible for acne. Furthermore, it has photo-protective properties.
- **Hyaluronic Acid** (SODIUM HYALURONATE) has strong moisturizing and film-forming properties. The hyaluronic acid film helps preserve the most important characteristics of youthful, healthy skin, such as suppleness, elasticity and tone.
- **Evermat™** Botanical Mattifying Agent (ENANTIA CHLORANTHA EXTRACT and OLEANOLIC ACID) reduces pore size and shine and refines skin grain. It associates an extract from an African tree known for its ethno-medicinal properties and oleanolic acid. It regulates sebocyte differentiation and proliferation and inhibits the activity of 5 alpha-reductase, leading to a reduction in sebum secretion.
- **Moisture Matrix** (GLYCERYL ACRYLATE / ACRYLIC ACID COPOLYMER) is an excellent moisture balancing agent. It is substantive to the skin, thus helping to keep skin hydrated for extended periods.
- **Provitamin B5** (PANTHENOL) has anti-inflammatory, protecting and moisturizing actions. It helps restore and maintain natural skin moisture, leaving the skin feeling velvety and smooth.
- **Rosemary Extract** (ROSMARINUS OFFICINALIS / ROSEMARY LEAF EXTRACT) is credited with pore tightening, skin-softening, toning, sebo-regulating and purifying capacities.
- **Broad Band UVA and UVB Sun Filter** (BENZOPHENONE-4) gives a wide-band protection against strong sun radiation. It helps delay erythema and premature skin ageing due to noxious sun rays.

Concentrated Mattifying Cream

50 ml

This innovative light cream-based moisturizer offers balanced anti-shine moisture for normal to oily skin types. This innovative ingredient complex offers improvement in skin tone and texture.

Targeted

Skin Indications:

- Oily/acne prone skin
- Enlarged pores
- Blemished skin

Post-Treatment Indications:

- Photofacials
- Dermal Infusion
- Microdermabrasion

Directions for use: Every morning and evening, smooth over thoroughly cleansed and toned skin of face and neck using a gentle ascendant motion. With daily use, product should last: 3 months.

Effective

- Skin renewal is enhanced, lightening the look of photodamage.
- Ensures continued, optimal, balanced hydration to the epidermis all day/night.
- The appearance of pore size is reduced, improving the textural properties of the skin.
- Regular usage improves duration of benefits from acne-specific skin treatments.
- For optimal results, use with SwissTEC™ Clarifying Elixir and Concentrated Mattifying Serum.



Concentrated

- **CIC₂** The Stem Cells from Sea Fennel (CRITHMUM MARITIMUM CALLUS CULTURE FILTRATE), are a multifunctional active derived from a new technology. CIC₂ regulates pigmentary disorders by acting on the different steps of melanin synthesis, significantly lightening brown spots. It shows global protection against UVB induced free radicals. It stimulates cutaneous healing in terms of quality and of speed. It regulates keratogenesis, boosting cell proliferation and regulating differentiation. Skin renewal is stimulated and its aspect and radiance are improved.
- **Hyaluronic Acid** (SODIUM HYALURONATE) has strong moisturizing and film-forming properties. The hyaluronic acid film helps preserve the most important characteristics of youthful, healthy skin, such as suppleness, elasticity and tone.
- **Evermat™** Botanical Mattifying Agent (ENANTIA CHLORANTHA EXTRACT and OLEANOLIC ACID) reduces pore size and shine and refines skin grain. It associates an extract from an African tree known for its ethno-medicinal properties and oleanolic acid. It regulates sebocyte differentiation and proliferation and inhibits the activity of 5 alpha-reductase, leading to a reduction in sebum secretion.
- **Biological Re-Equilibrating Agent** (ALPHA-GLUCAN OLIGOSACCHARIDE) balances the biological equilibrium of the skin's functions, thus helping the skin defend itself against external aggressions such as pollution.
- **Shea Butter** (BUTYROSPERMUM PARKII/SHEA BUTTER) has cell regenerative virtues and thus efficiently delays skin ageing. It is moreover granted softening, moisturizing and restructuring virtues. It is organically cultivated.
- **Complex of Olive Oil Unsaponifiables** (OLEA EUROPAEA/OLIVE OIL UNSAPONIFIABLES) is constituted of dermo-functional substances extracted from olive oil. Thanks to its richness in natural esters, phytosterols, essential fatty acids and vitamin E, it has a moisturizing and restructuring action.
- **Anti-Lipasic Biosurfactant of Biotechnological Origin** (CANDIDA BOMBICOLA/GLUCOSE/METHYL RAPESEED-ATE FERMENT) protects and purifies the skin. It defends triglycerides against degradation, thus preventing cellular alterations due to oxidation mechanisms such as tissue inflammation. It has a specific microbicidal activity versus certain gram positive bacteria that are harmful to the skin (in particular Corynebacterium xerosis and Propionibacterium acnes) whilst respecting the natural cutaneous flora. It is a natural active, biodegradable and obtained through an ecological process.
- **Oleuropein** Multifunctional Active from Organically Grown Olive Leaves (OLEA EUROPAEA/OLIVE LEAF EXTRACT) is a natural polyphenol. It helps fight against free radicals, improve skin elasticity and moisturization and fight the bacteria responsible for acne. Furthermore, it has photo-protective properties.

Soothing Mineral Mask

50 ml

A rich formulation of calming and purifying ingredients designed to reduce the look of tender, reddened skin while removing pore-clogging impurities from the skin's surface.

Targeted

Skin Indications:

- Effective formula for all skin types.
- Oily and acne prone skin.
- Calms and soothes skin that has undergone cosmetic treatments.

Post-Treatment Indications:

- Photofacials
- Fractionated
- Fillers/Botox™
- Dermal Infusion
- Microdermabrasion

Directions for use: Apply a generous layer once or twice a week on perfectly cleansed skin of face and neck. Let set for 10–15 minutes. Gently remove with a soft sponge soaked with lukewarm water. Pat dry, tone and follow with day or night skincare. With 2x per week use, product should last: 4 months.

Effective

- Oil is absorbed and mattified, deeply purifying and calming the epidermis.
- This optimal balancing formula is ideal in treating acne prone skin.
- Irritation and redness is reduced, leaving the skin feeling energized.
- Soothes the reddened, irritated appearance of skin after fractional procedures.



Concentrated

- **Green Clay** (ILLITE) is part of the clay family. Clays are very fine particles, offering an extremely large contact surface to their environment, which gives them significant absorbing properties (water, fat, sebum). They are made up of layers of aluminum silicates, along with minerals. Green Clay is the most common clay and the richest in minerals. It has significant absorbing capacities and is thus ideal to treat oily skin, which it purifies and mattifies by absorbing the sebum and the skin's impurities.
- **Moroccan Lava Clay** (GHASSOUL) is a natural mineral clay mainly composed of stevensite, clayey ore with magnesium silicate. The literature mentioning Ghassoul grants it saponiferous, it has been incorporated into this face mask for a deep cleansing and balancing effect.
- **Sopholiance-S Swiss Alpine Oily Skin Treatment** (EPILOBIUM FLEISCHERI EXTRACT) is derived from a rare pink-to-purple flower grown organically in the Swiss Alps. It acts by inhibiting 5 alpha-reductase, thus reducing sebum production. It has also been shown to inhibit IL-1 and IL-8 to reduce skin inflammation. Clinical tests have shown that, as well as diminishing sebum production, it reduces the number of spots and the size of pores. A general cutaneous state improvement with less oily and less shiny skin was demonstrated.
- **Anti-Lipasic Biosurfactant of Biotechnological Origin** (CANDIDA BOMBICOLA/GLUCOSE/METHYL RAPESEED-ATE FERMENT) protects and purifies the skin. It defends triglycerides against degradation, thus preventing cellular alterations due to oxidation mechanisms such as tissue inflammation. It has a specific microbicidal activity versus certain Gram positive bacteria that are harmful to the skin (in particular Corynebacterium xerosis and Propionibacterium acnes) whilst respecting the natural cutaneous flora. It is a natural active, biodegradable and obtained through an ecological process.
- **Oleuropein Multifunctional Active from Organically Grown Olive Leaves** (OLEA EUROPAEA / OLIVE LEAF EXTRACT) is rich in Oleuropein, a natural polyphenol. It helps fight against free radicals, improve skin elasticity and moisturization, fight the bacteria responsible for acne. Furthermore, it has photo-protective properties.
- **Lavender Essential Oil** (LAVANDULA ANGUSTIFOLIA / LAVENDER OIL) is an aromacological fragrance with purifying and balancing virtues. It is also said to be soothing, toning and regenerative.

Lip-foliant™

15 ml

Gently removes impurities and dry skin cells while moisturizing and soothing dehydrated lips.

Targeted

Skin Indications:

- Effective exfoliation for all skin types.
- For dehydrated chapped lips, use more frequently than recommended.

Post-Treatment Indications:

- Photofacials
- Fractionated
- Fillers/Botox™
- Dermal Infusion
- Microdermabrasion

Directions for use: Apply a generous layer once or twice a week on lips. Massage until well penetrated rubbing lips together for better penetration. Rinse off. With 2x per week use, product should last: 4 months.

Effective

- Lips are left looking supple, soft and energized.
- Cools and soothes, improving the appearance of smooth lip tissue.
- Enhances the look of smooth, supple lips when used regularly after dermal filler lip injections.



Concentrated

- **The Sucrose Esters** (SUCROSE STEARATE and SUCROSE DISTEARATE) are emulsifiers based on natural and renewable raw materials. They are easily biodegradable and provide an excellent skin-feel. They improve smoothness, emolliency and moisturization and show cooling and soothing properties.
- **Peppermint Essential Oil** (MENTHA PIPERITA/PEPPERMINT OIL) is an aromacological fragrance credited with antiseptic, refreshing and toning properties.
- **Natural Antioxidant Complex** (TOCOPHEROL and GLYCINE SOJA/SOYBEAN OIL and HELIANTHUS ANNUUS/SUNFLOWER SEED OIL) protects the formula from oxidation. It is entirely plant-based.
- **Specific to the essential oil of German Camomile** (BISABOLOL) has anti-inflammatory and softening activities.
- **Fine Exfoliating Particles** (POLYETHYLENE) remove impurities and dead cells from the skin surface, thus stimulating skin oxygenation and cell turnover.

Soothing Gel

100 ml

This cooling gel formula contains Roman Chamomile Floral Water, which calms and soothes dry, reddened skin. SwissTEC™ Soothing Gel reduces the look of redness in the skin and re-establishes the appearance of skin's elasticity and diminishes the signs of aging.

Targeted

Skin Indications:

- Skin that has undergone cosmetic treatments.
- Skin affected by prolonged sun exposure.

Post-Treatment Indications:

- Use after any cosmetic treatment to soothe skin.

Directions for use: Use as needed to calm and sooth the skin after cosmetic treatments. This product can be used to calm the appearance of the skin after prolonged sun exposure. With daily use, product should last up to 3 months.

Effective

- Reduces the appearance of redness while cooling the skin.
- Helps to maintain the skin's natural moisture barrier leaving the skin to feel velvety smooth.
- Lines of expression are reduced.
- Cools and soothes, calming the reddened appearance of skin after Microdermabrasion, Intense Pulsed Light and Laser treatments.



Concentrated

- **Ameliox** (LECITHIN and CARNOSINE and TOCOPHEROL and SILYBUM MARIANUM FRUIT EXTRACT) is based on a liposomal complex of Carnosine and the antioxidants Silymarin and Tocopherols. It is designed to smooth the skin, to help maintain cutaneous elastic tissue and to reduce wrinkles. Clinical tests have shown that it visibly diminishes fine lines and wrinkles and increases skin firmness.
- **Hyaluronic Acid** (SODIUM HYALURONATE) has strong moisturizing and film-forming properties. The hyaluronic acid film helps preserve the most important characteristics of youthful, healthy skin, such as suppleness, elasticity and tone.
- **Provitamin B5** (PANTHENOL) has anti-inflammatory, protecting and moisturizing actions. It helps restore and maintain natural skin moisture, leaving the skin feeling velvety and smooth.
- **Algisium C2®** (METHYLSILANOL MANNURONATE) is an organic derivative of silicon. It has good moisturizing properties. It also plays a role in skin nutrition and tests have shown that it has cyto-stimulating, anti-free radical and anti-glycation activities. Furthermore, it improves venous tonicity and has firming and lipolytic properties. It also has an anti-inflammatory effect.
- **The Roman Chamomile Floral Water** (ANTHEMIS NOBILIS FLOWER WATER) is certified Organic (Cosmébio/ Ecocert) and is obtained by steam distillation of chamomile flowers. It is traditionally used for dry and inflamed skins as it helps calm and soothe.
- **Lavender Essential Oil** (LAVANDULA ANGUSTIFOLIA / LAVENDER OIL) is an aromacological fragrance with purifying and balancing virtues. It is also said to be soothing, toning and regenerative.

Intensive Anti-Redness Balm

50 ml

SwissTEC™ Intensive Anti-Redness Balm prevents and reverses the signs of skin irritation in the form of redness and tenderness. Soothes and stabilizes the appearance of skin that has been inflamed due to cosmetic treatments. Intensive Anti-Redness Balm can also be used regularly as an effective anti-aging treatment mask.

Targeted

Skin Indications:

- Skin that has undergone cosmetic treatments.
- Skin affected by prolonged sun exposure.

Post-Treatment Indications:

- Use after any cosmetic treatment to soothe skin.

Directions for use: Use as needed to calm and sooth the skin after cosmetic treatments. This product can be used to calm the appearance of the skin after prolonged sun exposure. With daily use, product should last: 3 months.

Effective

- Decreases the appearance and sensation heat, calming tender skin.
- Aids in maintaining the skin's natural moisture balance leaving the skin to feel velvety smooth.
- Soothes reddened skin, decreasing the appearance of inflammation in the skin.
- Protects the skin against environmental and biological factors while soothing sensitive skin prone to irritation.
- Effectively relieves the post-treatment effects of Fractional, Skin Tightening, Intense Pulsed Light, Hair Removal procedures and other Laser procedures.



Concentrated

- **Larch Extract** (GALACTOARABINAN) is a highly functional polysaccharide, extracted from the unused portion of already harvested Larch trees (Larix family). It is a new, natural, multifunctional and safe ingredient. Larch extract acts as an excellent moisture control additive by holding the moisture within the molecule matrix under dry conditions. It significantly reduces Trans Epidermal Water Loss (TEWL).
- **The Emulsifying Base of Plant Origin** (CETEARYL WHEAT STRAW GLYCOSIDES and CETEARYL ALCOHOL) is obtained from wheat hay. This entirely natural product allows the obtention of very stable emulsions.
- **Shea Butter** (BUTYROSPERMUM PARKII/SHEA BUTTER) has cell regenerative virtues and thus efficiently delays skin ageing. It is moreover granted softening, moisturizing and restructuring virtues. It is organically cultivated.
- **Bisabolol** (BISABOLOL) is a natural active ingredient of botanical origin, known to have anti-irritant, anti-inflammatory and anti-microbial properties. It can help reduce UV-induced erythema and is said to protect the skin from the effects of daily stress and accelerate the cutaneous healing process. It is found in several plants, including candeia trees, yarrow and chamomile, which have been used in traditional medicine for hundreds of years.
- **Castor Seed Oil** (RICINUS COMMUNIS/CASTOR SEED OIL) is rich in fatty acids and has moisturizing properties. Castor is an annual herbaceous plant that was used by the ancients for its purgative properties.
- **The Soothing Active from an Indian Plant** (BOERHAVIA DIFFUSA ROOT EXTRACT) re-establishes the sensitivity threshold of the skin by stopping the amplification and by contributing to resolving of the inflammatory reaction. In vivo tests have demonstrated that this active limits the appearance of erythema caused by a neurogenic substance, diminishes skin redness due to shaving and has a soothing long-term effect, significantly reducing skin sensitivity and irritability, whilst showing a regenerating and moisturizing effect.
- **The Soothing Biomimetic LipoPeptide** (PALMITOYL TRIPEPTIDE-8) prevents and reverses the signs of inflammation. It was designed for optimal penetration and efficacy. In vitro tests have shown that it reduces UVB-induced inflammatory response and that it inhibits the inflammatory cascade, thus giving optimal skin protection. It has a direct impact on vasodilation and clinical tests have shown that it calms and soothes irritated skin. It helps to maintain and restore a normal skin sensitivity threshold.
- **Provitamin B5** (PANTHENOL) has anti-inflammatory, protecting and moisturizing actions. It helps restore and maintain natural skin moisture, leaving the skin feeling velvety and smooth.

Global Protect SPF 30

50 ml

The optimal sun protection solution. This moisturizing sun protection cream offers full protection from harmful UV rays, pollution and other damaging environmental factors. SwissTEC™ Global Protect SPF 30 nourishes the skin with potent antioxidants enhancing its natural, healthy glow while serving as a protective shield locking out environmental free radicals that can be damaging and lead to fine lines, wrinkles and age spots.

Targeted

Skin Indications:

- Effective protection for all skin types everyday.

Post-Treatment Indications:

- Use after any cosmetic treatment to protect the skin.

Directions for use: Apply 30 minutes prior to sun exposure. Smooth over cleansed and toned skin. Repeat the application frequently.

Effective

- Safeguards against UVA and UVB rays.
- Protects against pre-mature aging.
- Offers ideal moisturization while improving the appearance of radiance in the skin.
- Non-whitening formula for transparent appearance upon application.



Concentrated

- **The Filmo Protecting Active** (BIOSACCHARIDE GUM-4) is an anionic polysaccharide. It helps limit aggression to the skin, in particular those linked to UV rays, to pollution and to heavy metals, as well as to the intensive use of cleansing agents.
- **Micronized Titanium Dioxide** (TITANIUM DIOXIDE) gives a safe and effective broad-spectrum UV protection with optimum transparency. It helps protect against sun radiation and delays erythema.
- **Micronized Zinc Oxide** (ZINC OXIDE) gives a safe and effective broad-spectrum UV protection with optimum transparency. In particular, it offers excellent UVA protection. It helps protect the skin against sun radiation and delays premature skin ageing due to noxious sun rays.
- **UVB Filter** (OCTOCRYLENE) helps protect against sun radiation and delays erythema.
- **Broad Band UVA and UVB Sun Filter** (BENZOPHENONE-3) gives a wide-band protection against strong sun radiation. It helps delay erythema and premature skin ageing due to noxious sun rays.
- **Vitamin E** (TOCOPHERYL ACETATE) has an anti-oxidant action and skin moisturizing properties. It helps the skin look more radiant and tones tissue. It also plays an important role in preventing damage due to UV radiation.
- **Provitamin B5** (PANTHENOL) has anti-inflammatory, protecting and moisturizing actions. It helps restore and maintain natural skin moisture, leaving the skin feeling velvety and smooth.
- **Larch Extract** (GALACTOARABINAN) is a highly functional polysaccharide, extracted from the unused portion of already harvested Larch trees (Larix family). It acts as an excellent moisture control additive by holding the moisture within the molecule matrix under dry conditions. It significantly reduces trans epidermal water loss (TEWL).

Global Protect SPF 50

50 ml

The ultimate sun protection solution. This powerful sun protection cream offers full protection from harmful UV rays, pollution and other damaging environmental factors. SwissTEC™ Global Protect SPF 50 nourishes the skin with potent antioxidants enhancing its natural, healthy glow while serving as a protective shield locking out environmental free radicals that can be damaging and lead to fine lines, wrinkles and age spots. This powerful barrier works effectively to protect skin that has undergone cosmetic treatments, working to block harmful factors that can damage or reverse the results of these treatments.

Targeted

Skin Indications:

- Effective protection for all skin types everyday.

Post-Treatment Indications:

- Use after any cosmetic treatment to protect the skin.

Directions for use: Apply 30 minutes prior to sun exposure. Smooth over cleansed and toned skin. Repeat the application frequently.

Effective

- Provides ultimate protection from UVA and UVB rays.
- Offers a safe and effective broad-spectrum UVA and UVB protection safeguarding the skin from harmful effects of the sun.
- Ensures optimal moisturization while improving the appearance of luminosity.
- Non-whitening formula for transparent appearance upon application.



Concentrated

- **The Filmo Protecting Active** (BIOSACCHARIDE GUM-4) is an anionic polysaccharide. It helps limit the aggressions to the skin, in particular those linked to UV rays, to pollution and to heavy metals, as well as to the intensive use of cleansing agents.
- **Micronized Titanium Dioxide** (TITANIUM DIOXIDE) gives a safe and effective broad-spectrum UV protection with optimum transparency. It helps protect against sun radiation and delays erythema.
- **Micronized Zinc Oxide** (ZINC OXIDE) gives a safe and effective broad-spectrum UV protection with optimum transparency. In particular, it gives excellent UVA protection. It helps protect the skin against sun radiation and delays premature skin ageing due to noxious sun rays.
- **UVB Filter** (OCTOCRYLENE) helps protect against sun radiation and delays erythema.
- **Broad Band UVA and UVB Sun Filter** (BENZOPHENONE-3) gives a wide-band protection against strong sun radiation. It helps delay erythema and premature skin ageing due to noxious sun rays.
- **Vitamin E** (TOCOPHERYL ACETATE) has an anti-oxidant action and skin moisturizing properties. It helps the skin look more radiant and tones tissue. It also plays an important role in preventing damage due to UV radiation.
- **Provitamin B5** (PANTHENOL) has anti-inflammatory, protecting and moisturizing actions. It helps restore and maintain natural skin moisture, leaving the skin feeling velvety and smooth.

SwissTEC™ Performance Ingredient Results

CIC₂: Slows the signs of aging, lightening the look of brown spots while enhancing skin renewal and radiance.

- At a concentration of 0.1%, reduces Phenylalanine captured by melanocytes by 22% and at a concentration of 0.5%, reduction rate is 39%.
- At a concentration of 0.1%, reduces melanin synthesis by 13% and at a concentration of 0.5% reduction rate is 37%.
- At a concentration of 0.1%, inhibits tyrosinase activity in reconstituted epidermis by 19% and at a concentration of 0.5% inhibits at a rate of 32%.

Aquarich™: Optimizes the moisture retention in the epidermis while having a long lasting strengthening effect on the skin barrier properties.

- Provides the skin with its essential elements and natural nutrients.
- Long term moisturization effect of 2% and 4% when measured against a placebo.
- Has a strong immediate moisturizing effect, measures at +34% over a placebo.
- Has an improved moisturizing effect in comparison to the hyaluronic acid. Even after 24 hours, the upper epidermis layer has a higher skin moisture content of +9.6%.

Ameliiox: Reverses the signs of deterioration to the skin's elastic tissue to reduce the appearance of lines of expression and wrinkles. After 4 weeks:

- At 2% concentration, frown lines are decreased by 24%.
- At 2% concentration, wrinkle depth of crows feet decreases by 27%.

Of 20 women surveyed on the test panel after 4 weeks of use:

- 90% claimed immediate smoothing effect.
- 85% claimed reduction in frown lines.
- 90% claimed skin firmness is improved.
- 85% claimed a visible reduction of fine lines/wrinkles.

Sveltonyl®: This firming complex renews skin's appearance, enhancing the look of tighter, youthful skin.

- Presents a significant increase in oxygen consumption in epithelial cells, stimulating consumption of excess lipid reserves resulting in a localized slimming effect. These results are dosage dependant.
- At .01%, an increase of 47%.
- At .10%, an increase of 135%.
- At .30%, an increase of 190%.

Pentavitin®: A highly effective moisture regulator under the driest of conditions. Where most moisturizing agents would cease action, Pentavitin® continues to be active and effective.

- Optimal performance when compared to other moisturizing agents, moisture binding capacity reaches 160% after 10 minutes compared to Glycerin which only reaches 130% in the same timeframe.

Vitamin C-PMG: Reduces the appearance of dark circles, wrinkles and photodamage due to its free-radical scavenging effect.

- MAP is a stable form of Vitamin C and remains stable in an aqueous solution.
- Proven to actively aid in collagen reformation and decrease melanin formulation in the skin.

Panthenol: Has an anti-inflammatory effect and soothes irritated skin. It stimulates epithelization and helps to heal minor wounds.

- At a concentration of 1%, epithelization and wound healing is increased by a factor of 1.33.

Evermat™: Refines the texture of the skin, decreasing the appearance of enlarged pores and shine. When 3% Evermat™ is used:

- Skin-shine reduced by 55% ¹.
- Pore size reduced by 36% ².
- Sebum flow reduced by 49% ³.

¹ 1st quartile variation

² 1st quartile variation

³ 1st quartile variation

